

Sheet1

```

***** **      ***** **      **
**      **      **      **      **      **
**      **      **      **      **      **
*****      **      **      **      **      **
**      **      **      **      * * **
**      **      **      **      * * **
**      **      **      **      * * **
**      ***** *****      ***      ***

```

```

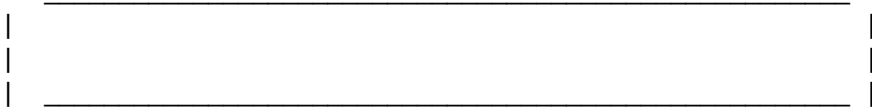
***** **      **      **      ***** *****
**      **      **      **      **      **
**      **      **      **      **      **
**      *****      **      **      **      **
**      **      **      ***** *****      **
**      **      **      **      **      **      **
**      **      **      **      **      **      **
*****      **      **      **      **      **      **

```

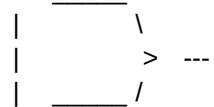
To : PC Users  
 From: Gene Brownd

Subject: Flow charts made simple.

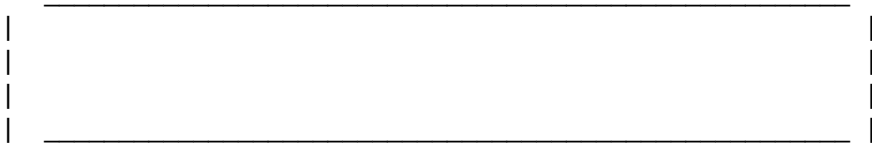
The file FLCHRT.WKS is a `123' worksheet for the IBM PC. The purpose is to be able to quickly draw a flow chart outline using Alt keys. You can then either type in the boxes or print the outline and write in the logic. You should be able to outline a page in just a few minutes. The `Alt E' option allows you to enlarge a box. You may copy this file, rename it, and create your own version.



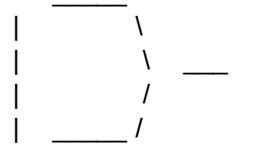
Alt A



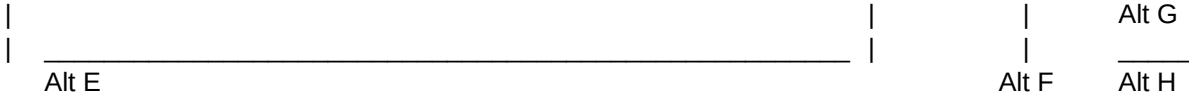
Alt C



Alt B



Alt D



In order to draw one of the above items place the curser in the upper left corner of the area you want it in. Then use the Alt key and the appropriate letter. The boxes should display properly when the curser is positioned in columns A,E or I. Start your flow chart begining in row 60. Have fun!

=====  
=====

To print use  
Alt P

Print range  
is A60..M123

Alt K =  
clear print  
range

/CZ~~/XQ  
/CIY~~/XQ  
/CIX~~/XQ  
/CW~~/XQ  
/CIV~~/XQ  
/CIU~~/XQ  
/CIT~~/XQ  
/CIS~~/XQ  
/PPAGPQ/XQ  
/REIR~/XQ  
/XMn50~

Alt M = MENU

CHART  
GO TO BEGINING OF FLOW CHART  
{HOME}{goto}a60~/XQ

===== == ==

INSTR	NOP
GO TO BEGINING OF INSTRUCTIONS	NO OPERATION
{home}{goto}A22~/XQ	/XQ